

The Quint Audio C30-ANC is a high performance full range Active Noise Cancelling (ANC) loudspeaker designed for near- and mid-field PA applications in clubs and halls.

As with all Quint Audio loudspeakers, a great deal of attention was given to perfect constant directivity. In the mid-high area the C30-ANC therefore is equipped with a powerful large format coaxial driver mounted on an accurate CD-horn with a dispersion pattern of 70x40 degrees HxV.

The crossover of the C30-ANC is set in such a way that in the mid frequencies the horn and the woofers work together in perfect coherence over a large bandwidth. This way a huge surplus in dynamic headroom in this area is realized.

The Active Noise Cancelling functionality is created by the use of two 15" woofers in each side of the C30-ANC that are working together with two 15" woofers in the front in order to create a controlled dispersion with maximum full range output on the front side and minimum overspill on the area around and behind the system.

With this unique Quint Audio ANC technique you will be able to create more sound pressure in front of the speaker while the amount of sound energy on the back is minimized.

The Active Noise Cancelling C30-ANC can be used with standard settings or can be tuned in to a specific room with specific distances to the walls for maximum noise cancelling efficiency.

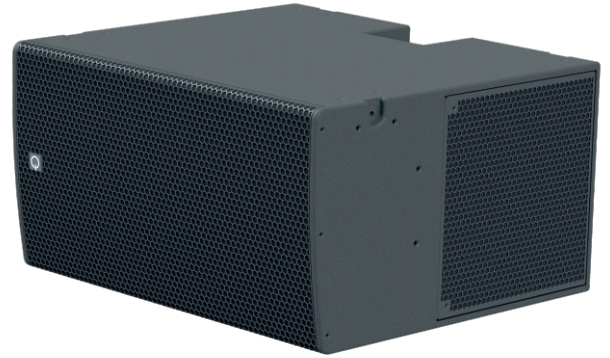
For higher output levels, the C30-ANC can be combined with an ANC subwoofer.

DESIGN:

The Quint Audio C30-ANC is an active noise cancelling 4x15"/1x4"-2.5" coaxial tri-amplified (mid-high passive) or quad-amplified (mid-high bi-amped) loudspeaker with a very well defined dispersion of 70 horizontally x 40 degrees vertically.

The C30-ANC is built of birch plywood and equipped with a wear, tear and impact-resistant hybrid coating. The cabinet features several rigging points that facilitate upright mounting.

Two SpeakOn8 connection points are positioned on the back of the cabinet. The front is finished by a coated steel grille and covered with an acoustically transparent layer.



MODEL	C30-ANC
type	2x15"/2x15"ANC/1x4"-2.5" coaxial
filter	active/passive 3-channel DSP control
	active 4-channel DSP control
power handling	Front 2400W / ANC 2400W / 110W MF-HF
program power	Front 4800W / ANC 4800W / 220W MF-HF
impedance	LF & ANC 4Ohms / MF & HF 8Ohms
sensitivity	Front & ANC 100dBWm / MF-HF 109dBWm
program SPL 1m	Front 134dB & ANC 134dB / MF-HF 130dB
frequency range	40-19.000 Hz
dispersion	70°x40° hxv
weight	85 kg
size (wxhxd)	900 x 490 x 830 mm

